

CERTIFIED LAND CORNER RECORDATION

DESCRIPTION OF CORNER EVIDENCE FOUND, AND ORIGINAL RECORD (If known)

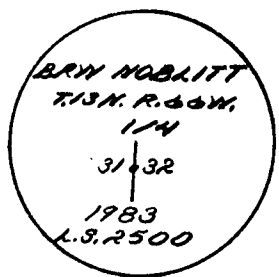
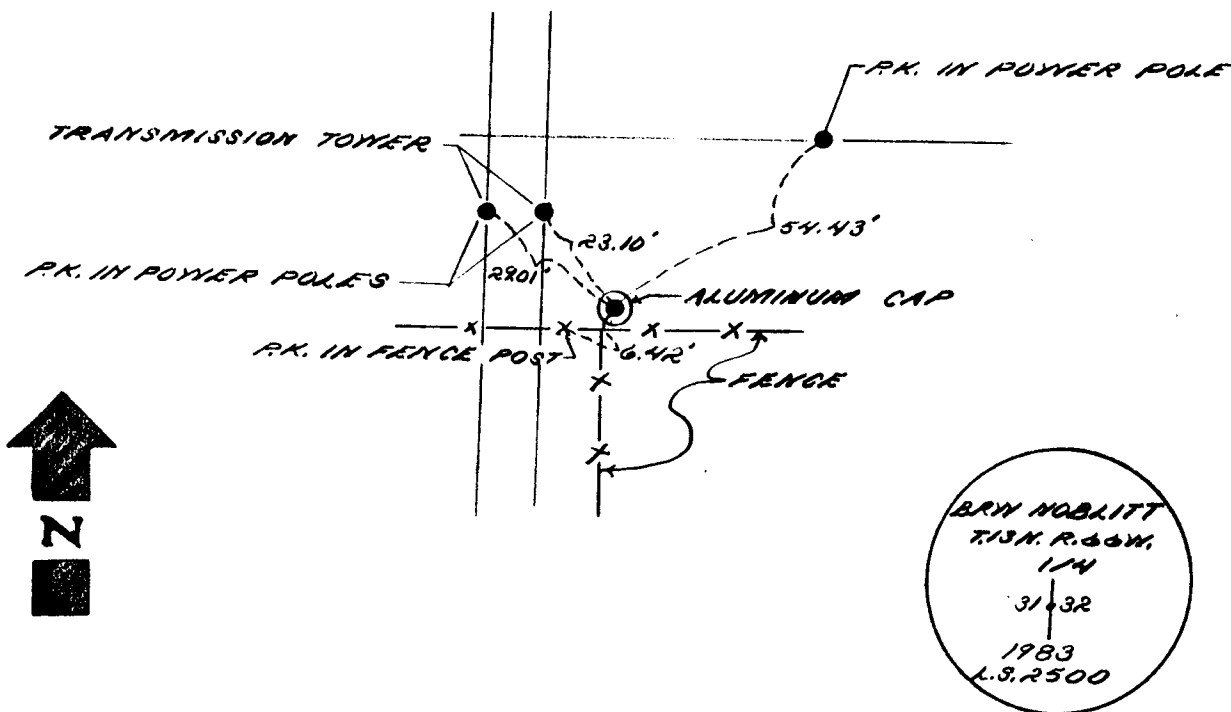
T.13N.
 31.32
 R.66W.

FOUND: NO EVIDENCE OF PREVIOUS MONUMENTATION
 SET: 1/2" X 24" REDAR W/ALUMINUM CAP MARKED AS SHOWN
 BELOW. CORNER POSITION ESTABLISHED FROM EXISTING MONUMENTATION
 FOUND IN SURROUNDING SUBDIVISIONS.

DESCRIPTION OF MONUMENT AND ACCESSORIES ESTABLISHED TO PERPETUATE THE ORIGINAL LOCATION OF THIS CORNER:

SEE TIES BELOW

SKETCH, WITH COURSE AND DISTANCE TO ADJACENT CORNER IF DETERMINED IN THIS SURVEY. (May Sketch or Paste Reproduction on Reverse Side.)



I, JOHN A. STELL certify that I have carefully performed or reviewed the work done on the diagrammed corner as reported on this recordation form and approve the same.

John A. Stell
 Signature of Surveyor

L.S. 2500
 Registration No.

STATE OF WYOMING,
 Office of Clerk and Recorder,
 County of Taramie

682528

This "corner record" was filed for record on the APR 6 day of 1983, 19____, was noted on the cross-index plat and is assigned page No. _____, in book No. _____

Janet C. Whitehead
 County Official

Cross Index No. _____	T. _____	R. _____	Mer. _____
_____	T. _____	R. _____	Mer. _____
_____	T. _____	R. _____	Mer. _____
_____	T. _____	R. _____	Mer. _____
_____	T. _____	R. _____	Mer. _____
_____	T. _____	R. _____	Mer. _____
_____	T. _____	R. _____	Mer. _____